

2H

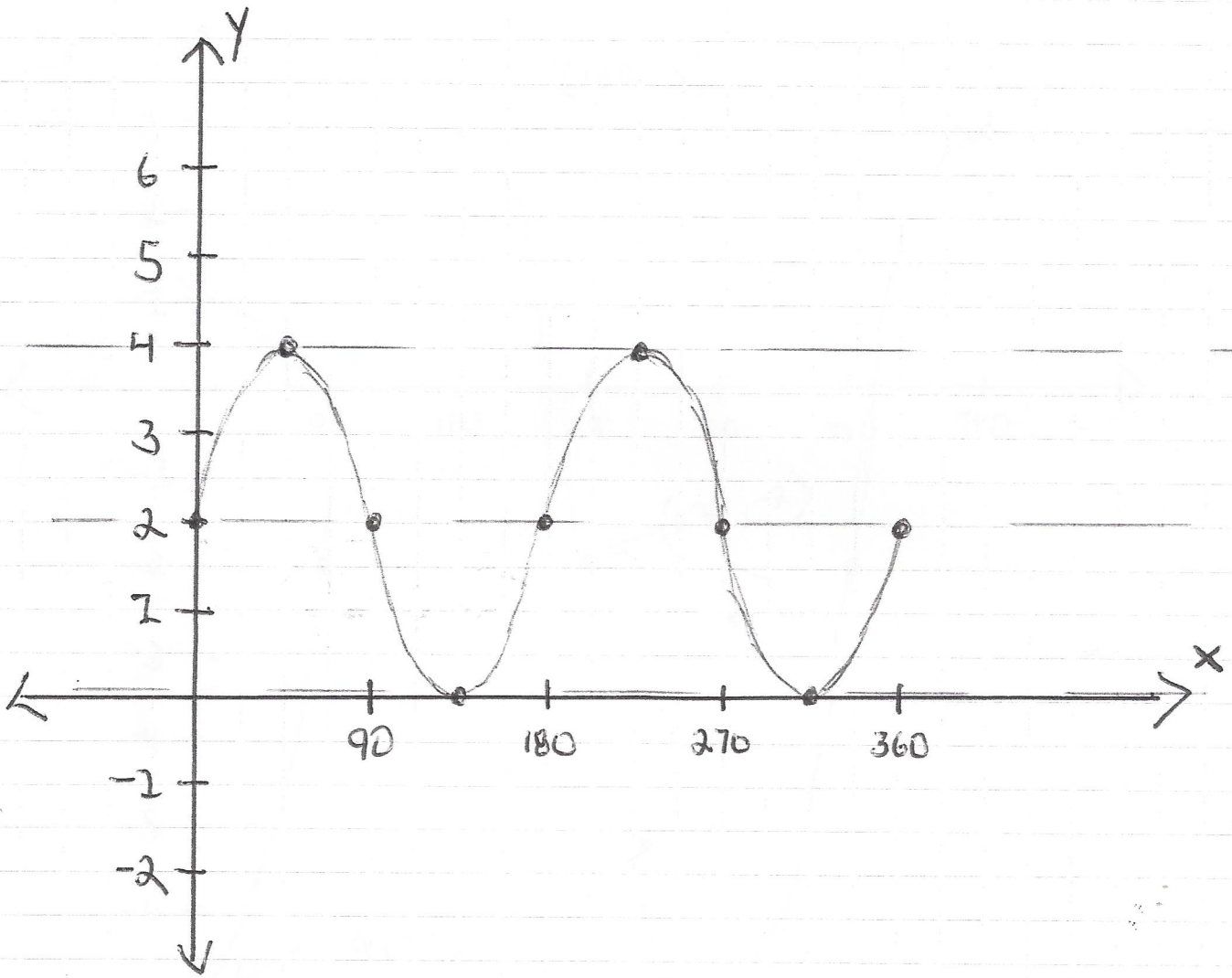
$$1) \quad y = 3 \sin(x) + 2$$
$$3 \cos(x - 90) + 2$$

$$2 \quad y = 4 \sin(2(x - 45))$$

$$y = 4 \cos(2(x - 90))$$

Graph AT LEAST ONE CYCLE of :

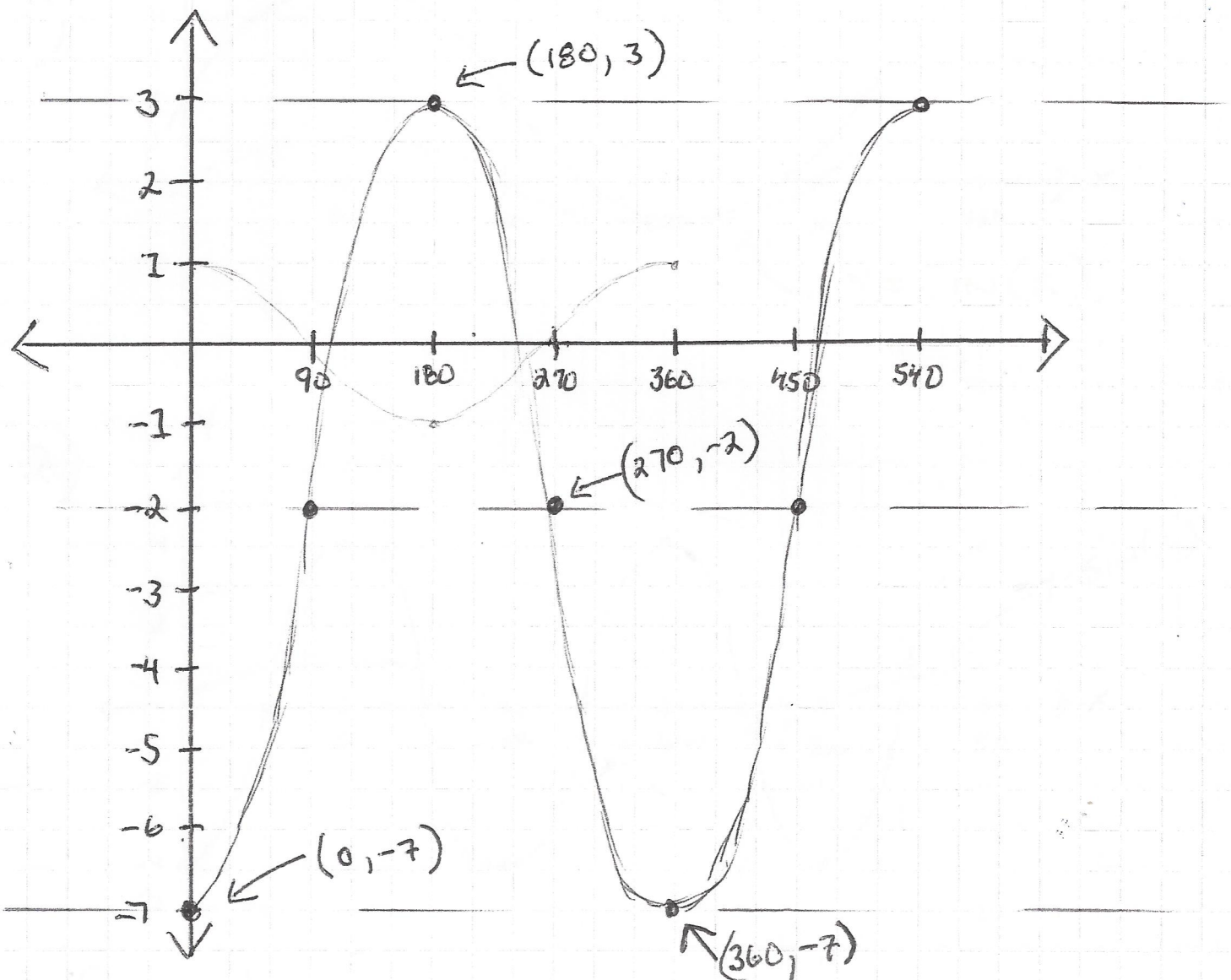
$$Y = 2 \sin(2(x)) + 2$$



Graph AT LEAST ONE cycle of:

$$y = 5 \cos(x - 180) - 2$$

WITHOUT A CALCULATOR.



$$y = 5 \sin(x - 90) - 2$$