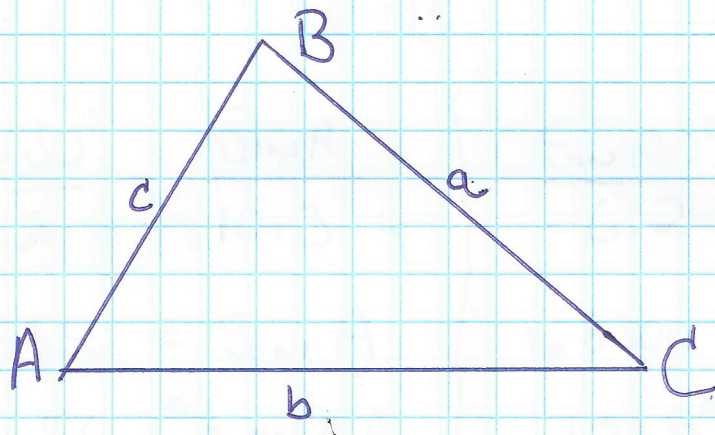
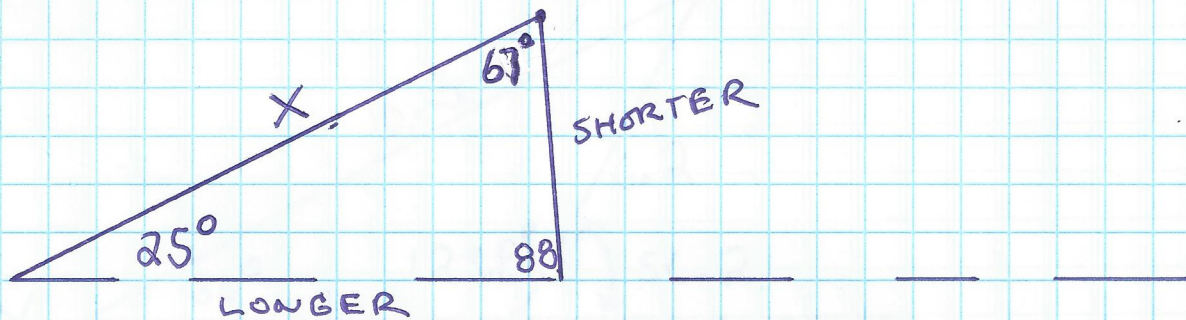
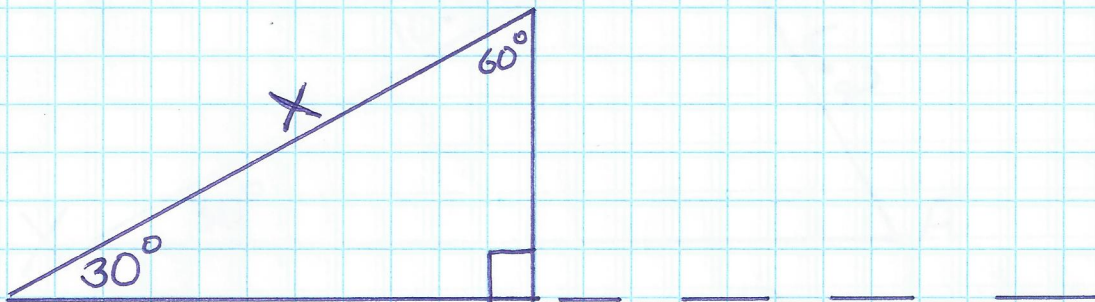


## 8.6 Law of Sines



$$\frac{\sin A}{a} = \frac{\sin B}{b} = \frac{\sin C}{c}$$

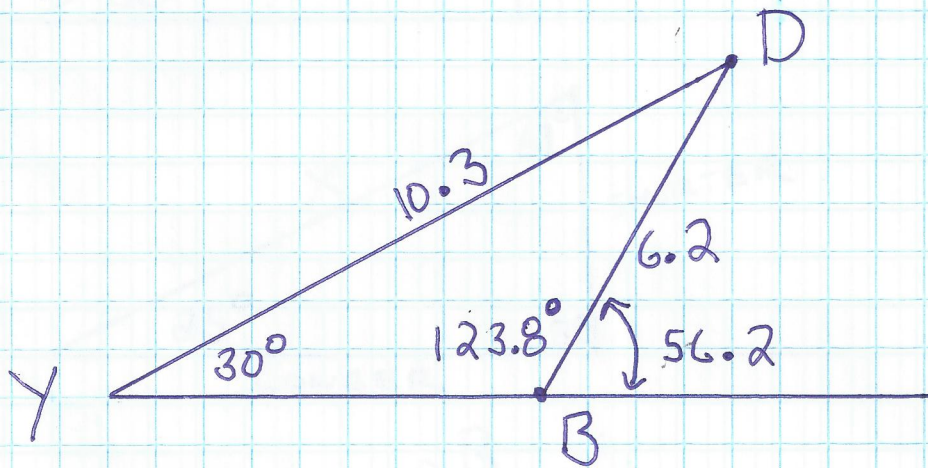
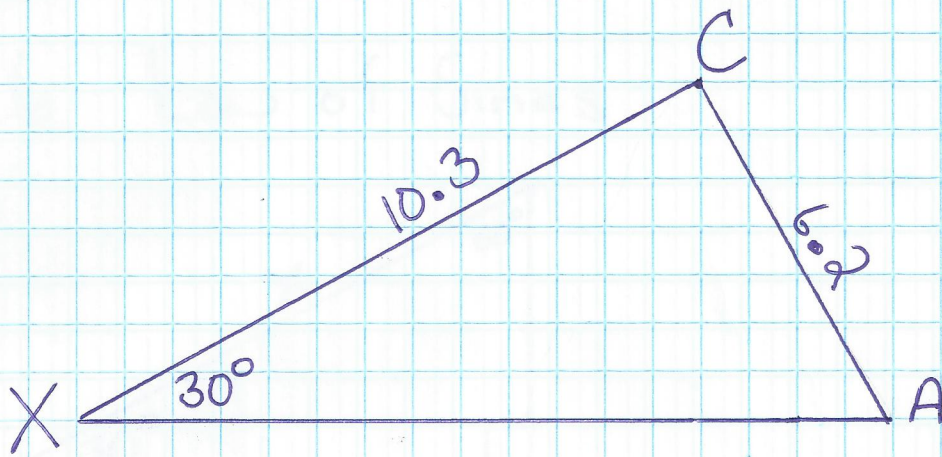
ALL 3 ANGLES AND 1 SIDE

2 ANGLES AND 1 SIDE (KNOW 2  $\rightarrow$  KNOW ALL 3)

1 ANGLE AND 2 SIDE (NON INCLUDED)

#169 Pg 472 #1-5, Pg 444 #13





$$\frac{\sin 30^\circ}{6.2} = \frac{\sin A}{10.3}$$

$$.8306 = \sin A$$

$$56.2^\circ = m\angle A$$

$$m\angle C = 123.8$$

$$\frac{\sin 30^\circ}{6.2} = \frac{\sin B}{10.3}$$

$$.8306 = \sin B$$

$$123.8^\circ = m\angle B$$

$$m\angle D = 56.2$$