

Ry 427 #1-5, 14-17

1a)

t	x	y
-2	-7	-3
-1	-4	-1
0	-1	1
1	2	3
2	5	5

b)

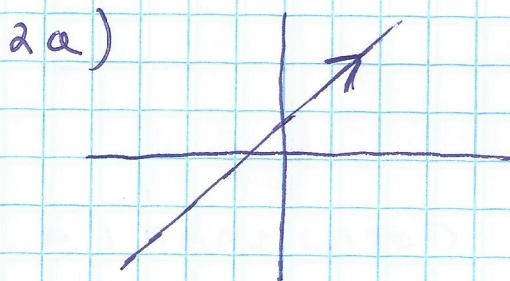
t	x	y
-2	-1	4
-1	0	1
0	1	0
1	2	1
2	3	4

1c)

t	x	y
-2	4	1
-1	1	2
0	0	3
1	1	4
2	4	5

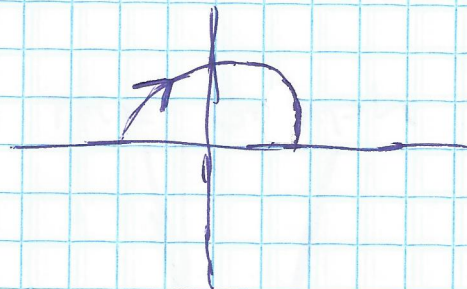
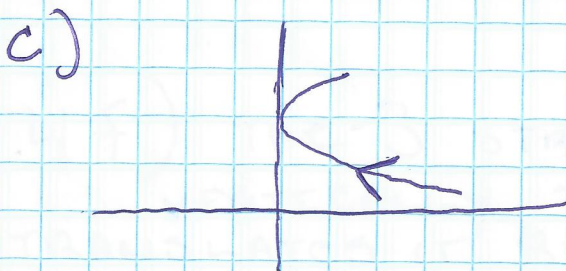
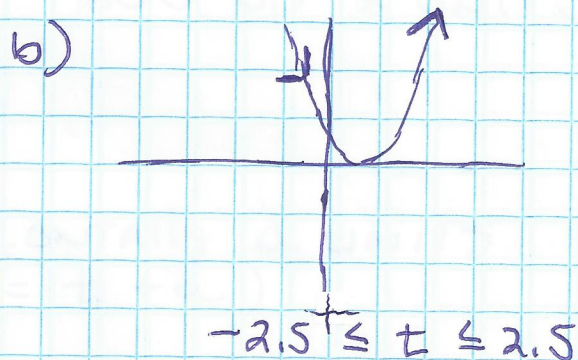
d)

t	x	y
-2	-3	0
-1	-2	1.73
0	-1	2
1	0	1.73
2	1	0

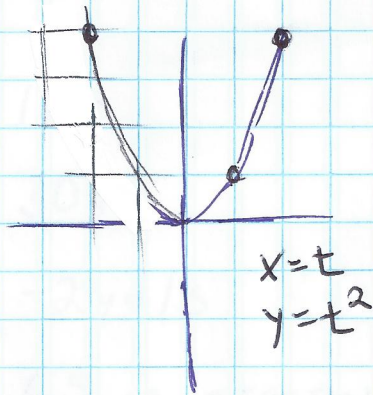


$$-3 \leq t \leq 2.5$$

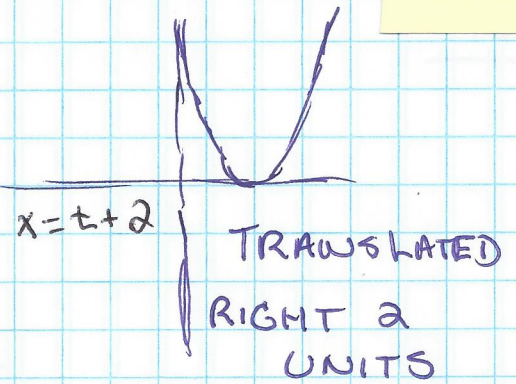
$$[-9.4, 9.4, 1, -6.2, 6.2, 1]$$



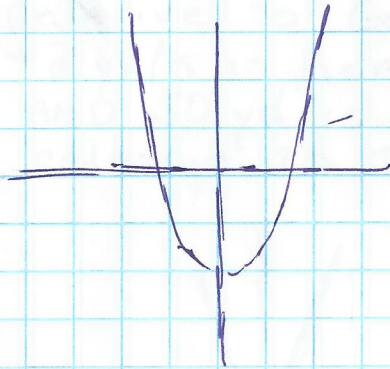
3a)



3b)

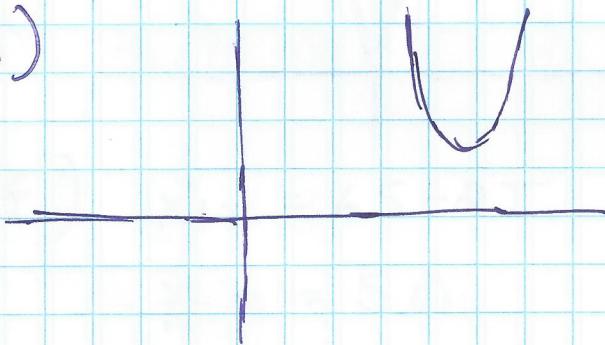


3c)



TRANSLATED  
DOWN 3 UNITS

d)

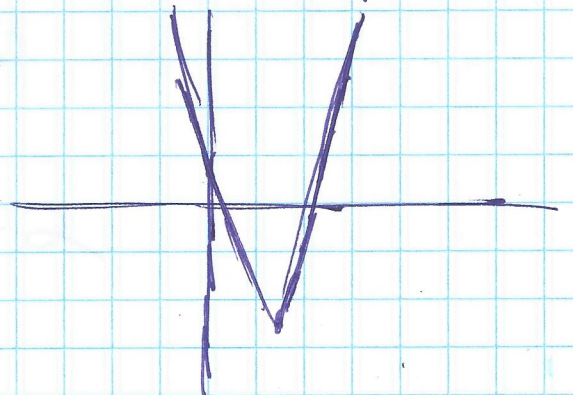


TRANSLATED  
RIGHT 5 UNITS  
AND UP 2 UNITS

e) TRANSLATED HORIZONTALLY  $a$  UNITS  
( $x = t + a$ )

AND VERTICALLY  $b$  UNITS  
( $y = t^2 + b$ )

4f) THE 3 STRETCHES THE GRAPH  
VERTICALLY, THE 2  
TRANSLATES IT RIGHT  
2 UNITS, AND THE 4  
BEING SUBTRACTED  
TRANSLATES IT DOWN  
4 UNITS



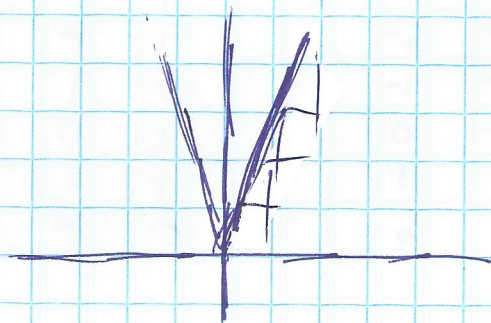
5a) 15s

b) 30yd

c)  $-2 \text{ yd/s}$

d) 65 is starting position relative to Goal Line,  
 $-2 \text{ yd/s}$  is her velocity,  
AND 50 yd is her position relative to the sideline

e)



f)  $x_{1T} = 65 - 2T$

$y_{1T} = 50$

$[0, 100, 10, 0, 65, 10]$

$0 \leq t \leq 30$

She crosses 10 yard line AFTER 27.5 sec

---

14)  $2, 1 - \sqrt{3}, 1 + \sqrt{3}$

15)  $2.5n^2 - 5.5n - 3$

16)  $y = -5/3x + 5$

17)  $y = -2x^2 + 5x - 2$