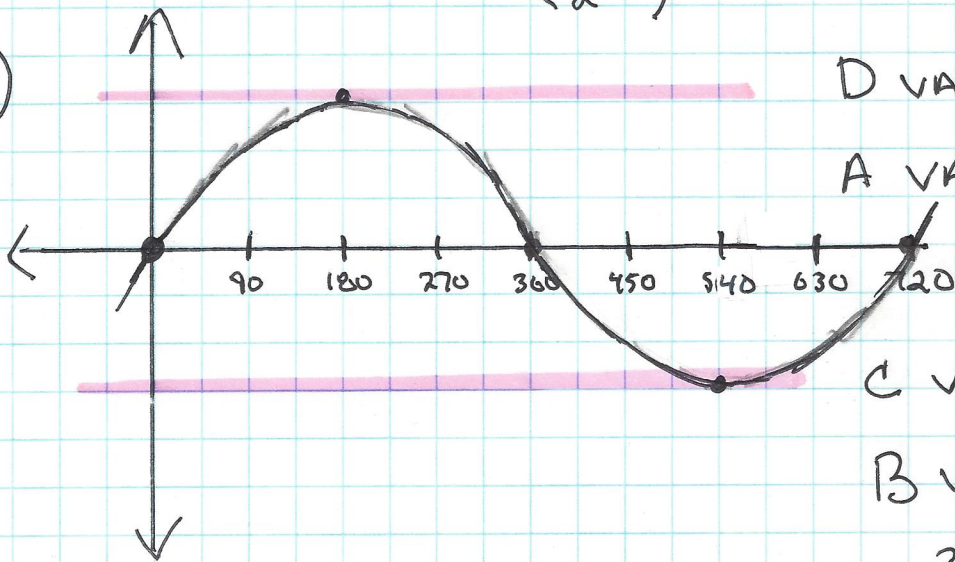


UNIT NINE WORKSHEET
PARTIAL KEY

$$y = 3 \sin\left(\frac{1}{2}x\right)$$

14)



D VALUE = 0

A VALUE = 3

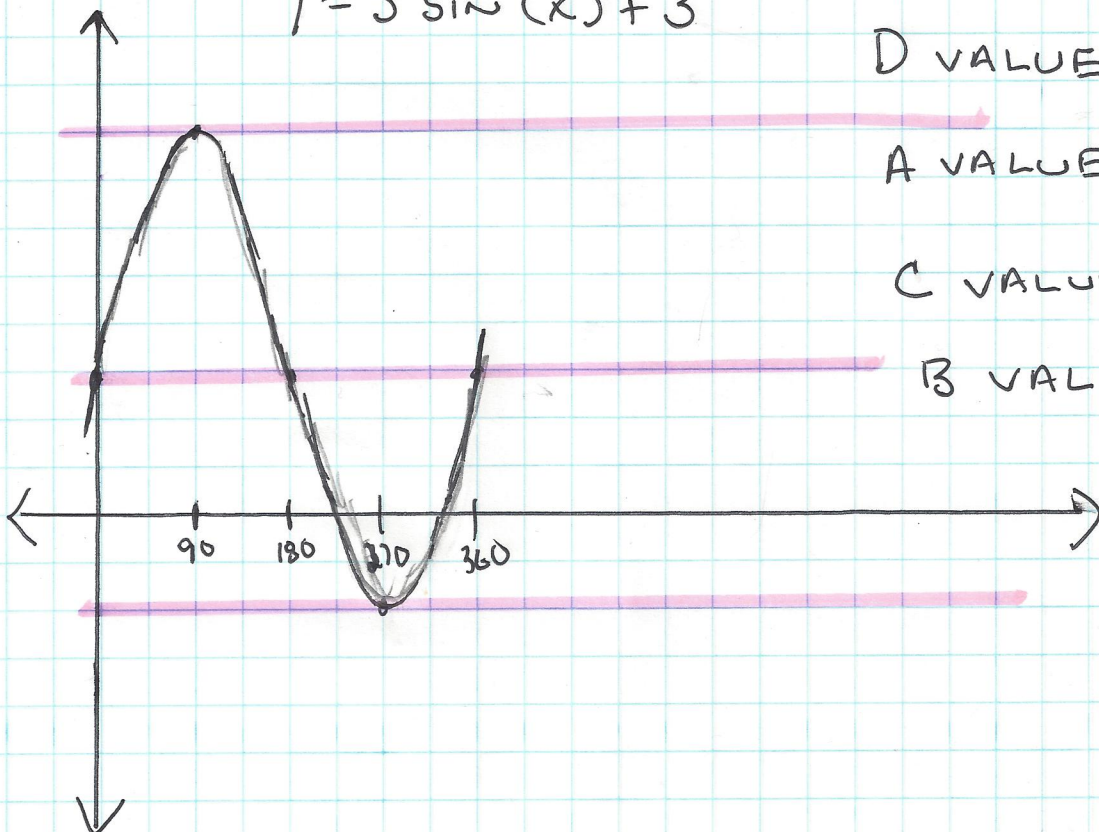
C VALUE = 0

B VALUE

$$\frac{360}{\frac{1}{2}} = 720$$

15)

$$y = 5 \sin(x) + 3$$

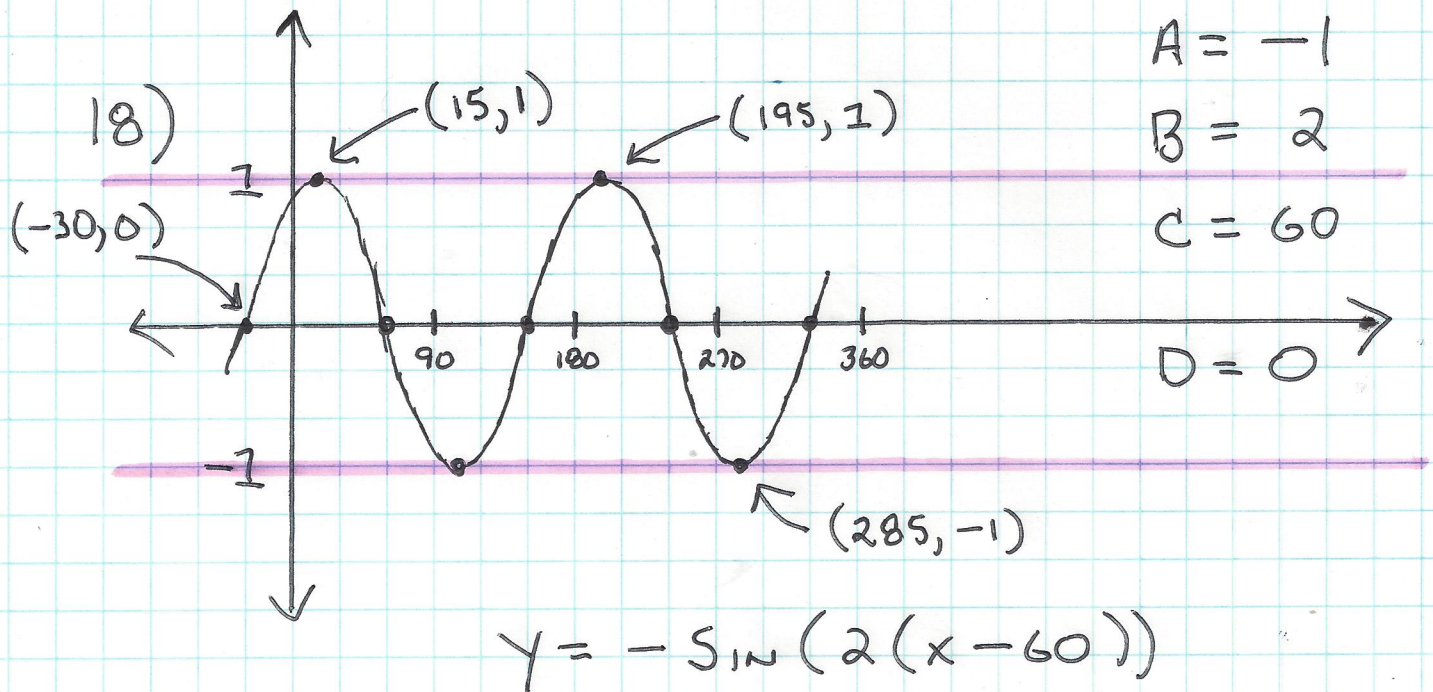
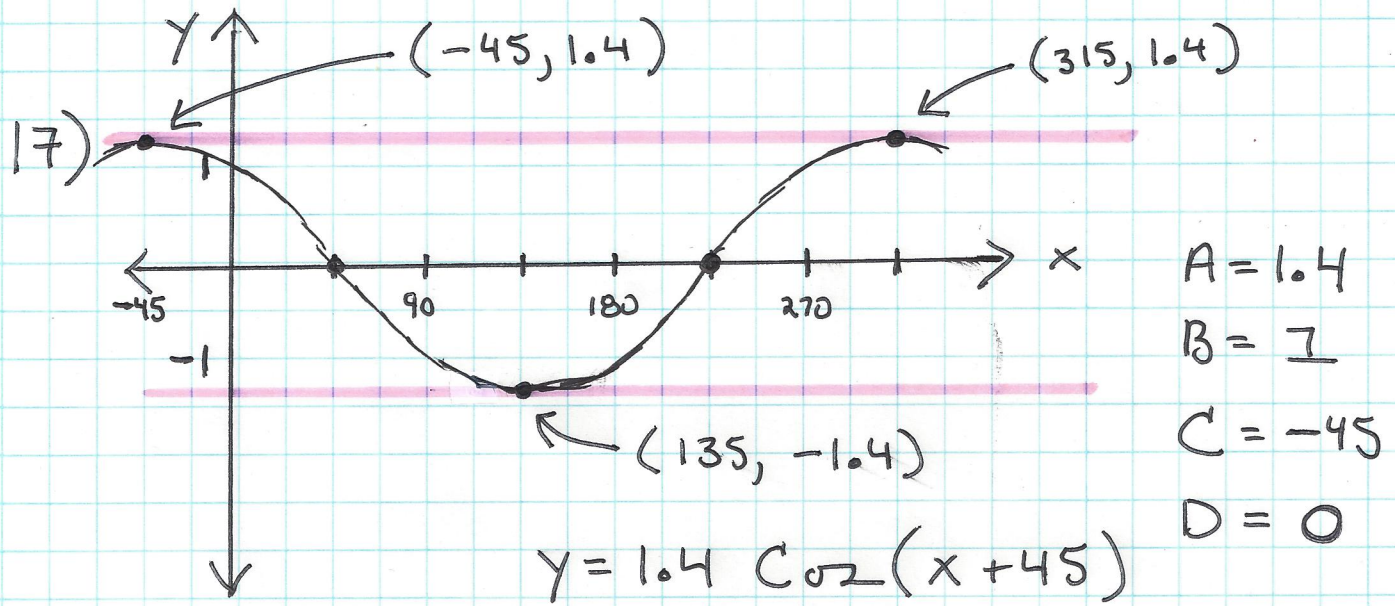


D VALUE =

A VALUE =

C VALUE = \emptyset

B VALUE = 1



23) $A = 2$ $B = 1$ $C = 60$ $D = -1$

$y = 2 \sin(x - 60) - 1$

OR $y = 2 \cos(x - 150) - 1$